

GRID TOP VIBRATORY TABLES

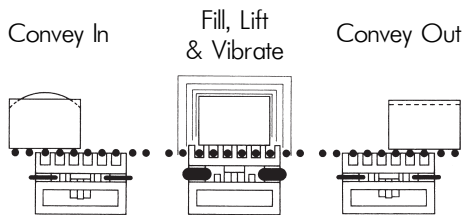
The Cleveland Vibrator Company GT grid top vibratory table is ideal for automatic and semi-automatic packaging and filling lines that use roller conveyor systems. The table is installed at the filling or compaction station of an in-line conveyor system. Tables are available in standard, low profile, or custom configurations.

GT • GRID TOP TABLES

MODEL NUMBER	DECK WIDTH	DECK LENGTH	DECK HEIGHT	NORMAL LOAD CAPACITY
GT - 2326	23"	26"	20 ½"	300 - 1000 lbs.
GT - 2338	23"	38"	20 ½"	300 - 1000 lbs.
GT - 2950	29"	50"	22 ½"	300 - 4000 lbs.
GT - 3550	35"	50"	22 ½"	1000 - 4000 lbs.
GT - 4750	47"	50"	22 ½"	1000 - 4000 lbs.



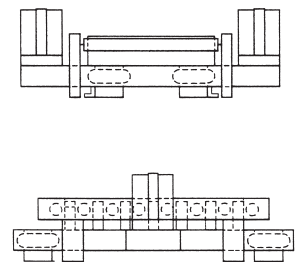
GT Series ▲



The load is first rolled into position over the vibrating station. Air mounts lift the load above the rollers while vibration is applied. After the vibration sequence, the load is lowered back onto the rollers, ready for the process to be repeated on the next container.

GT-0 • LOW PROFILE GRID TOP TABLES

MODEL NUMBER	DECK WIDTH	DECK LENGTH	DECK HEIGHT	NORMAL LOAD CAPACITY
GT-0 - 2326	23"	26"	13 ½"	500 - 1000 lbs.
GT-0 - 2338	23"	38"	13 ½"	500 - 1000 lbs.
GT-0 - 2950	29"	50"	15 ½"	1000 - 2000 lbs.
GT-0 - 3550	35"	50"	15 ½"	1000 - 2000 lbs.
GT-0 - 4750	47"	50"	15 ½"	1000 - 4000 lbs.



GT-0 Low Profile